



MF 9305 Xtra

The ideal choice, semi-compact and versatile

The new MF 9305 Xtra Telehandler now joins the extensive range of Massey Ferguson telehandlers. MF 9305 Xtra has a semi-compact format combined with a lift capacity close to that of its larger counterpart the MF 9306 Xtra. The ideal machine, easy to manoeuvre in tight areas such as narrow barns.

MF 9305 Xtra - Highlights

- Impressive lift capacities in a semi-compact format. 5.8m height and up to 3 tones
- Two cab positions for maximum versatility including low position for load operation in narrow building
- Compact chassis for optimum access where space is limited
- Impressive list of standard equipments : combined flow, automatic steering mode selection, pressure release system.



FROM MASSEY FERGUSON

Specifications

Loader performance (norm EN 1459: 1998 Annex B)		MF 9305 Xtra
Max. lift capacity		
at ground level kg	3,000	
at full lift height kg	2,500	
at load configuration 2m length @ 4 m height kg	2,000	
Max. lift height m	5.8	
Forward reach - boom extended m	3.13	
Hydraulic system		
Boom - gear pump capacity litre/min	100	
Transmission		
Type	Hydrostatic	
Hydraulic speeds	2	
1st gear speed* Km/h	9.7	
2nd gear speed* Km/h	40	
Engine		
Capacity/no. cylinders litre/no.	3.6/4	
Injection	Electronic	
ISO hp @ 2200 rev/min	100	
Max. torque (ISO 14396) Nm	410	
Tyres		
Standard	405/70 - 20	
Optional	400/70 R 24	
Brakes		
	Oil immersed	
Weights and capacities		
Weight, without implement kg	5200	
Fuel tank capacity litres	115	
Cycle times		
Boom raised (seconds)	5.5	
Boom extended (seconds)	5	
Bucket crowded (seconds)	2.5	

* with max speed specified machine & 24" tyres

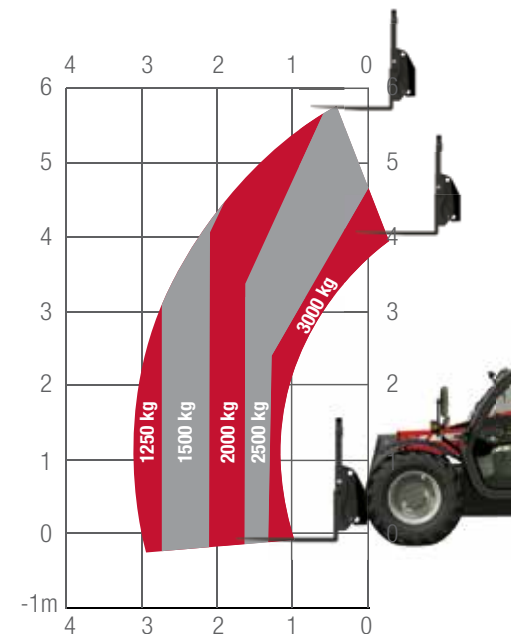


Standards and optional features

	MF 9305 Xtra
Hydraulic system	
All hydraulic function proportional and electro hydraulics	●
Flowsharing technology	●
End of line hydraulics	●
Flow management	●
End of line electrical output	○
Rear spoolvalves	○
Hydraulic implement locking	○
Transmission	
Speed control system	●
Left hand shuttle control	●
Right hand shuttle control	○
Left and right hand shuttle control	○
Eco Mode	●
30 kph maximum speed *	●
25 kph maximum speed *	○
40 kph maximum speed *	○
Three steering modes with automatic alignment	●
Cab	
Standard position	●
Low position	○
Others	
Reverse fan	○
Hydraulic hook	○
Boom suspension	○
Pneumatic seat	●
Heater in cab	●
Air conditioning	○
Aerial speakers	○
Roof wiper	○
Works lights	○
Mudguards	●
Implements	
Pallet fork	○
Digging bucket	○
Light material bucket	○
Grapple bucket	○
Grapple fork	○
Bale handler	○

● Standard ○ Optional * depending on tyre size

MF 9305 Xtra lift capacity



		MF 9305 Xtra	
		Std cab	Low position Cab
A	mm	4500	4500
B	mm	2333*	2100**
C	mm	264*	348**
D	mm	2800	2800
E	mm	2100	2100

* 24" tyres ** 20" tyres

