



TH406

Telehandler



SPECIFICATIONS

Engine

Engine Model	
Standard	Cat® C4.4 DITAAC
Optional	Cat® C4.4 DITAAC-ACERT
Gross Power	
Standard	74.5 kW/101 hp
Optional	93.1 kW/126 hp
Maximum Torque	
Standard	410 Nm/1400 rpm
Optional	499 Nm/1500 rpm
Bore	105 mm
Stroke	127 mm
Displacement	4.4 liter
<ul style="list-style-type: none"> All engine horsepower (hp) are metric. 	

Weights

Operating Weight	7200 kg
------------------	---------

Operating Specifications

Rated Load Capacity	3700 kg
Maximum Lift Height	6100 mm
Maximum Forward Reach	3109 mm
Top Travel Speed	40 km/h
Load at Max Height	2000 kg
Load at Max Reach	1500 kg

Service Refill Capacities

	liter
Fuel Tank	150
Hydraulic Tank	90

Tires

Standard	15.5/80-24 16PR
----------	-----------------

Brakes

Service Brake	
Servo assisted on front axle	
Parking Brake	
Mechanical on front axle	

Hydraulic System

Maximum System Pressure	250 bar
Maximum Pump Flow	150 liter/min
Pump Type	
Variable displacement load sensing axial piston pump	
Auxiliary Hydraulic Supply	
Intermittent	80 liter/min
Continuous	60 liter/min

Transmission Speeds

Forward	km/h
1	7
2	12
3	21
4	32
5	40
Reverse	
1	7
2	12
3	21

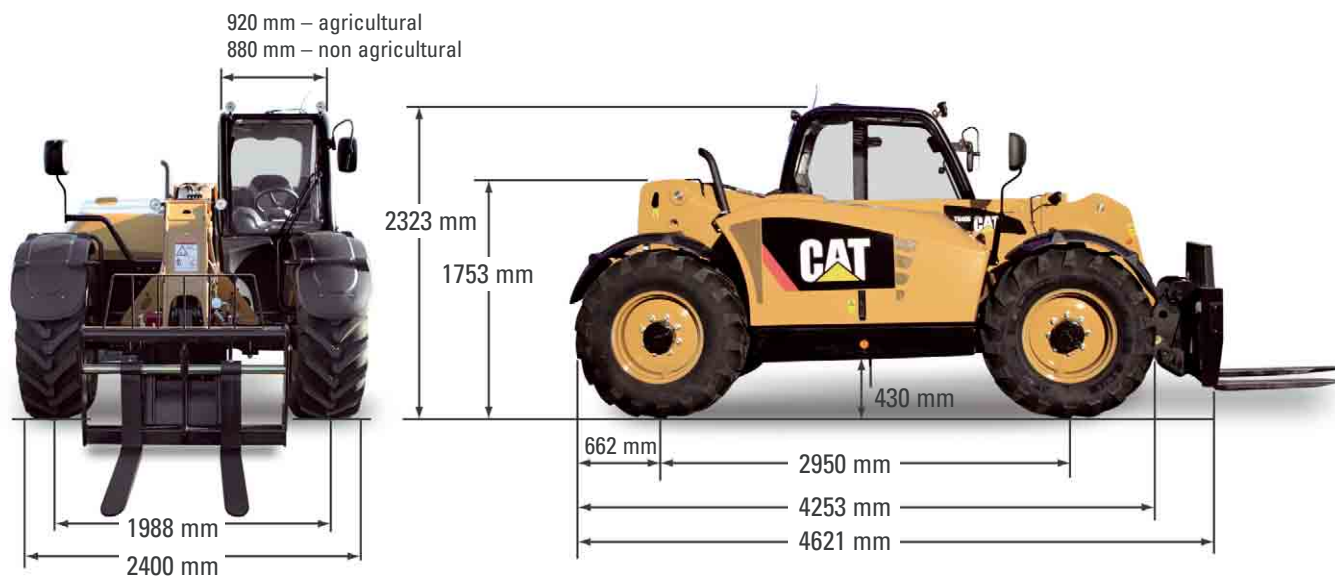
Boom Performance

	seconds
Boom Up	5
Boom Down	4
Tele In	4.5
Tele Out	5
Crowd Forward (dump)	3
Crowd Backward	3
Combined	
Up and Out	8.5
Down and In	8
Drawbar Pull 74.5 kW	82.4 kN
Drawbar Pull 93.1 kW	86.8 kN
Bucket Breakout Force to ISO8313	55 kN

Sound

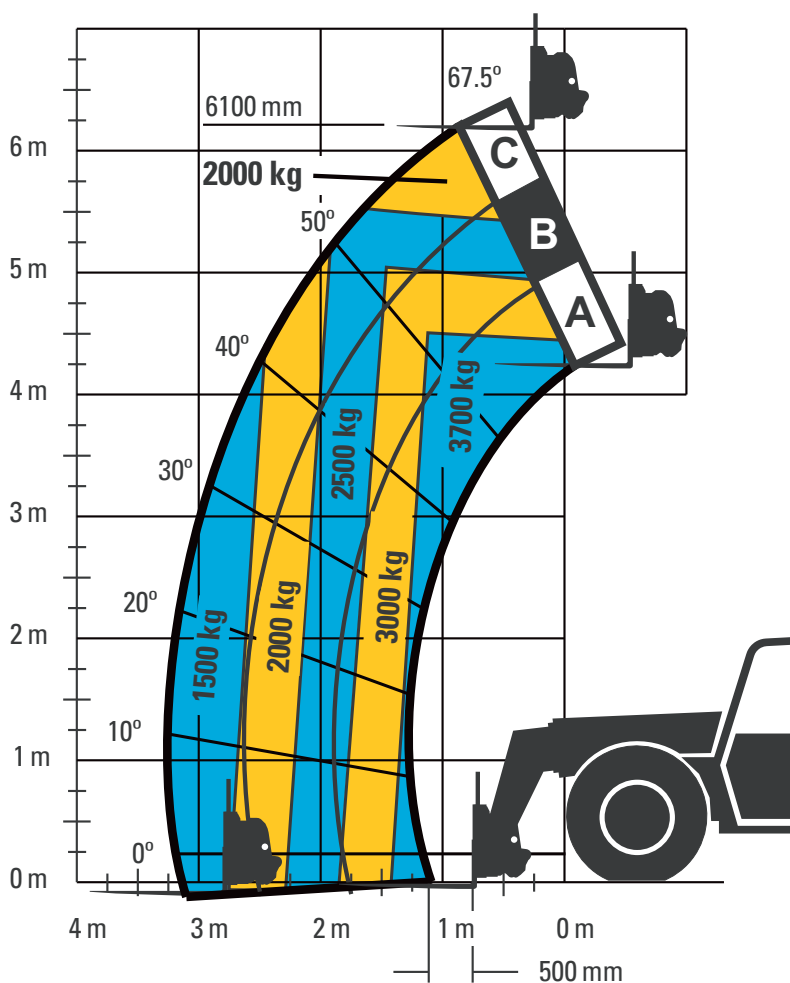
Operator Sound	78 dB(A)
----------------	----------

Dimensions



Outside turn radius over tires: 3585 mm

Load Chart



Due to continuous product improvements, machine specifications and/or equipment changes may be made without prior notification.

©2008 Caterpillar Inc. All Rights Reserved. CAT, CATERPILLAR, their respective logos, "Caterpillar Yellow" and the POWER EDGE trade dress, as well as corporate and product identity used herein, are trademarks of Caterpillar and may not be used without permission.