



TH255

Telehandler



SPECIFICATIONS

Engine

Engine Model	Cat® C4.4 Stage IIIA DIT
Maximum Torque	353 Nm/1400 rpm
Displacement	4.4 L
Gross Power	63 kW/84 hp

Weights

Operating Weight with Carriage and Forks	4899 kg
--	---------

Operating Specifications

Rated Load Capacity	2500 kg
Maximum Lift Height	5600 mm
Maximum Forward Reach	3250 mm
Top Travel Speed	26 km/h
Load Placing Height	3200 mm
Capacity at Max Height	2000 kg
Capacity at Max Reach	850 kg
Turning Radius over Tires	3200 mm

Hydraulic System – Implement

Pump Type	Single Section Gear Pump
Maximum system pressure	240 bar
Maximum Pump Flow	85 liter/min
<ul style="list-style-type: none"> Auxiliary Hydraulic Circuit used for all attachments equipped with cylinders or other hydraulic components. Consists of valves, controls, and hydraulic lines. 	

Service Refill Capacities

	liter
Fuel Tank	106
Hydraulic System	64

Tyres

Standard	12.00 x 16.5
Optional	14.00 x 17.5

Transmission

Transmission	Hydrostatic
Forward	Variable Speed
Reverse	Variable Speed

Boom Performance

	seconds
Boom Up	6.2
Boom Down	4.3
Tele In	3.4
Tele Out	6.3
Bucket dump	2
Bucket Crowd	2.4
Drawbar Pull (Loaded)	38.7 kN

Axles

- Planetary on front and rear axles.
- High bias limited slip differential on front axle.

Brakes

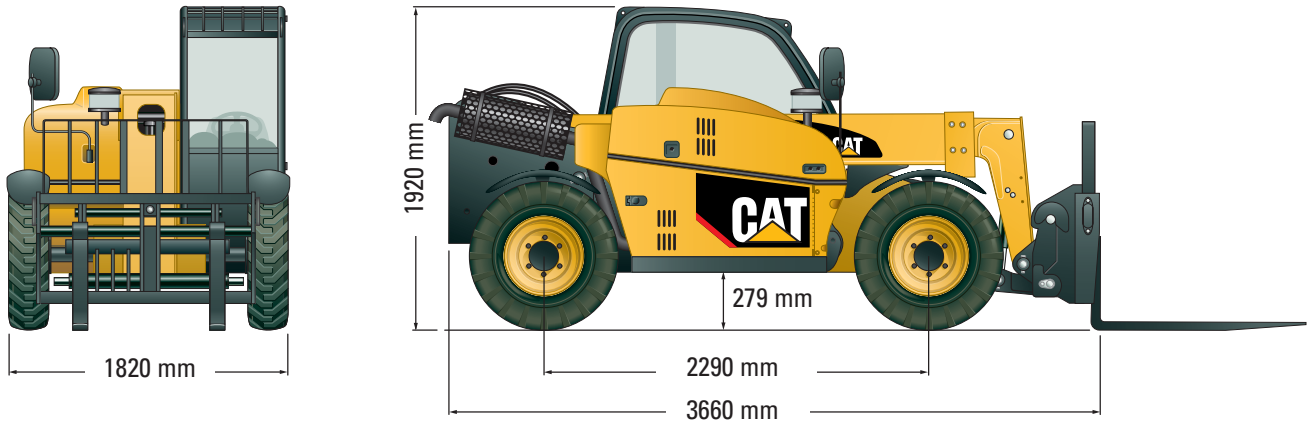
- Service Brakes are inboard wet disc brakes on front axles.
- Parking Brakes are wet disc spring-applied hydraulic release. Light on dash indicates when brake is on.

Instruments

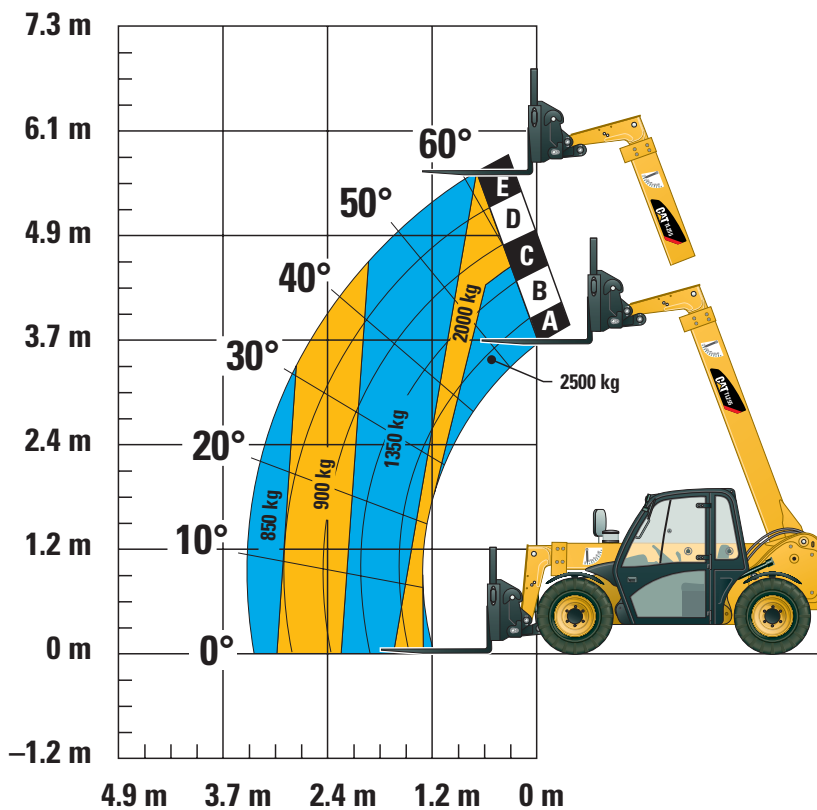
- Indicators for machine hours, fuel-level, steer mode, steering pressure, battery charge, coolant temperature, parking brake and engine pre-heat.
- Reverse motion alarm.
- Panel and switches are illuminated for night operation.

Dimensions

All dimensions are approximate.



Load Chart and Dimensions



IMPORTANT

Rated lift capacities shown are with machine equipped with carriage and pallet forks. The machine must be level on a firm surface with undamaged, properly inflated tires. Machine specifications and stability are based on rated lift capacities at specific boom angles and boom lengths. (If specifications are critical, the proposed application should be discussed with your dealer.)

DO NOT exceed rated lift capacity loads, as unstable and dangerous machine conditions will result.

DO NOT tip the machine forward to determine the allowable load.

Due to continuous product improvements, machine specifications and/or equipment changes may be made without prior notification. This machine meets or exceeds ANSI/ITSDF B56.6-2005 as originally manufactured for intended applications.

Due to continuous product improvements, machine specifications and/or equipment changes may be made without prior notification.

©2008 Caterpillar Inc. All Rights Reserved. CAT, CATERPILLAR, their respective logos, "Caterpillar Yellow" and the POWER EDGE trade dress, as well as corporate and product identity used herein, are trademarks of Caterpillar and may not be used without permission.