

TH255 Super Compact Telehandler

Specifications	
Maximum Lift Height	5.6 m
Rated Load Capacity	2500 kg
Maximum Forward Reach	3.25 m
Gross Engine Power	63 kW
Maximum Speed	26 km/h
Maximum Pump Flow	85 litre/min
Wheelbase	2.2 m
Turning Radius	3200 mm
Fuel Tank Capacity	106 L

Work Tools
Standard Carriage
Pallet Forks
Fork-Mounted Lifting Hook
Multi-Purpose Bucket
General Purpose Bucket
Light Material Bucket
Industrial Grapple Bucket
Material Handling Arm

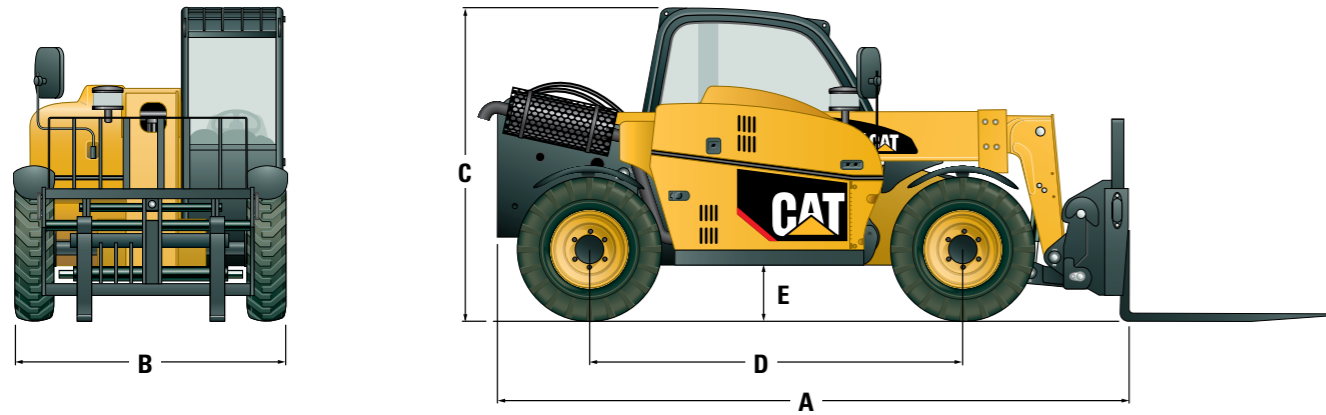


TH255

Super Compact Telehandler



Dimensions



mm	A	B	C	D	E
TH255	3660 mm	1820 mm	1920 mm	2290 mm	279 mm



**RELIABLE.
VERSATILE.
COMFORTABLE.**

Sunrise To Sunset. Built For Life On The Farm.

The Cat® TH255 Super Compact Telehandler is perfect for working in smaller spaces. A step up from skid steer loaders, this machine has the reach and capacity you need. A range of Cat Work Tools adds even more versatility. So climb in and get ready for the most productive day possible.

TH255

Tight spaces are no longer intimidating with its 3.2 m turning radius and low machine height

Three steering modes—crab, circle and two-wheel—and full-time four-wheel drive for non-slip, steady navigation



The comfortable cab has a single joystick with rocker switch that is easier to operate and has multi-function capability

With 2500 kg capacity and 3.25 m of reach, the TH255 provides the capability you need to place loads with greater ease

The standard universal skid steer loader (SSL) coupler is compatible with many skid steer attachments, for added versatility

A Cat® 63 kW Tier 3 engine reduces emissions and delivers the power you need

An accessible side-mounted engine and battery make for smoother serviceability

Built for performance and durability, Cat® Work Tools deliver high productivity, long life and excellent value